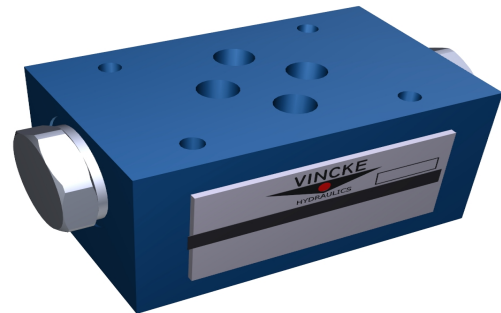


KCV CHECK VALVES

KCV series modular check valves allow free flow in one direction and block flow in the counter direction.



Technical characteristics

| Size | 6 | 10 | 16 |
|--------------------------------|-------------------------------|-----|-----|
| Max. Flow (L/min) | 40 | 100 | 250 |
| Max. W.P (Mpa) | 31.5 | | |
| Working fluid | mineral oil ; phosphate-ester | | |
| Fluid temperature (°C) | -20~70 | | |
| Viscosity (mm ² /s) | 12~380 | | |
| Opening pressure | A 0.05 B 0.25 C 0.4 | | |

Ordering code

Modular check Valve

NOMINAL SIZE: 06 Cetop 3 10 Cetop 5 16 cetop 7

P P Pipeline **A** A Pipeline

B B Pipeline **T** T Pipeline

KCV-6-P

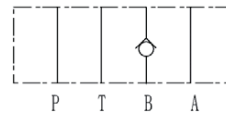
Code symbol



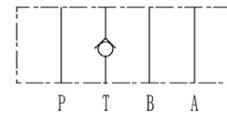
KCV-06-P



KCV-06-A



KCV-06-B

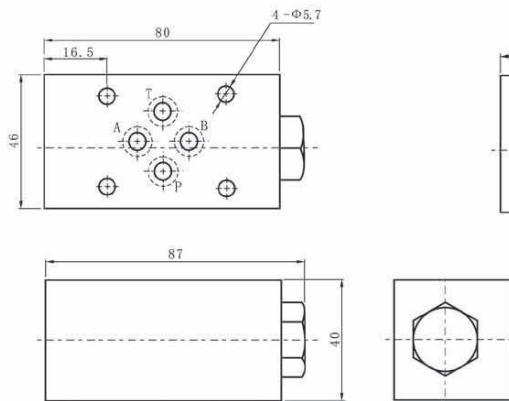


KCV-06-T

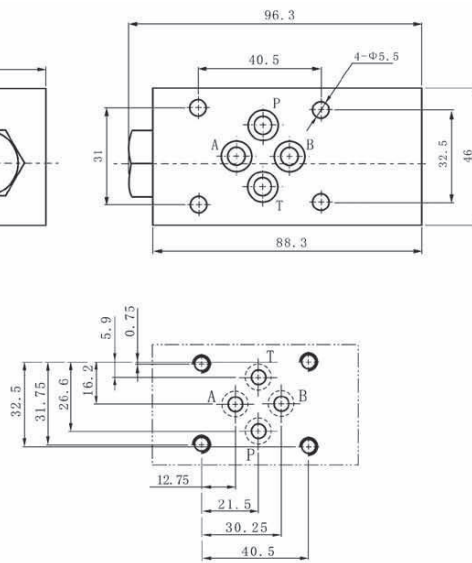
KCV CHECK VALVES

Dimensions

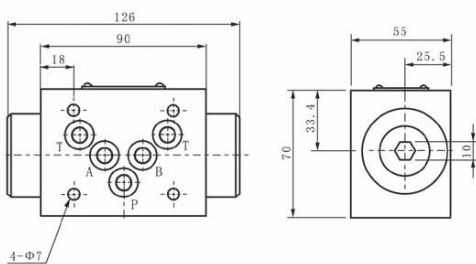
KCV-06-P/T/B



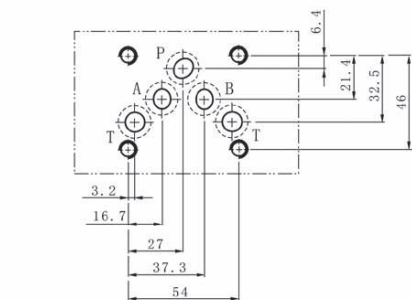
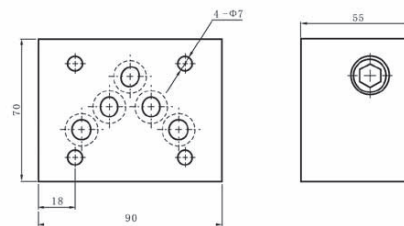
KCV-06-A



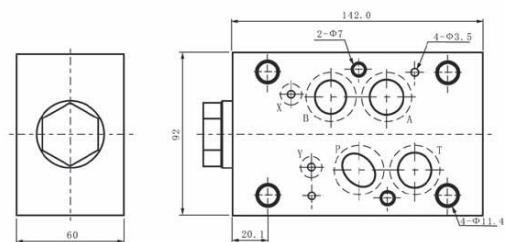
KCV-10-A/B



KCV-10-P/T



KCV-16-P



KPCV CHECK VALVES

KPCV series modular check valves allow free flow in one direction and block flow in the counter direction.



Technical characteristics

| Size | 6 | 10 | 16 |
|--------------------------------|-------------------------------|-----|-----|
| Max. Flow (L/min) | 60 | 100 | 200 |
| Max. W.P (Mpa) | 31.5 | | |
| Working fluid | mineral oil ; phosphate-ester | | |
| Fluid temperature (°C) | -20~70 | | |
| Viscosity (mm ² /s) | 2,8~380 | | |
| Opening pressure | A 0.05 B 0.25 C 0.4 | | |

Ordering code

KPCV-06-..

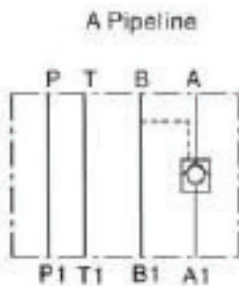
Modular check Valve

NOMINAL SIZE: 06 Cetop 3 10 Cetop 5 16 cetop 7

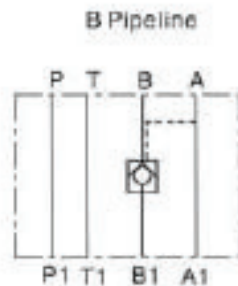
A A Pipeline

B B Pipeline **W** AB Pipeline

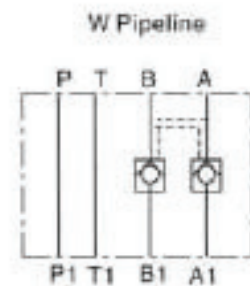
Code symbol



KPCV-06-A



KPCV-06-B

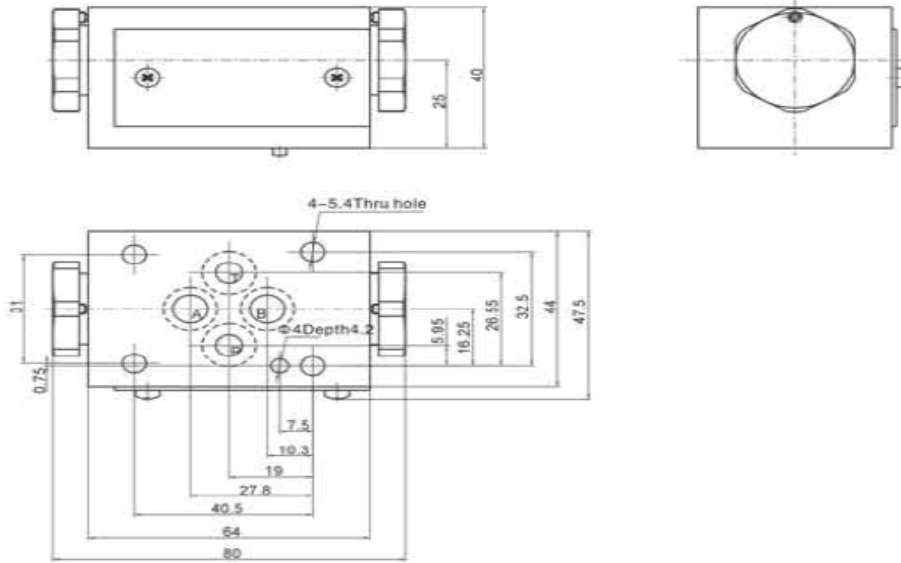


KPCV-06-W

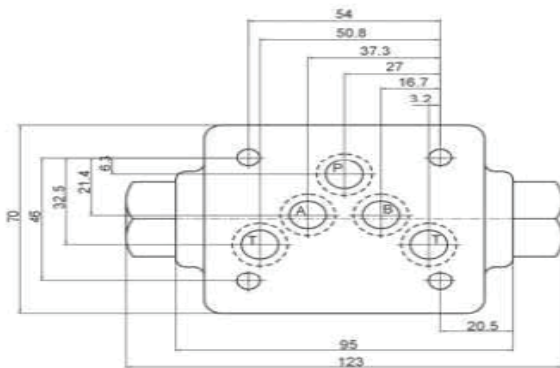
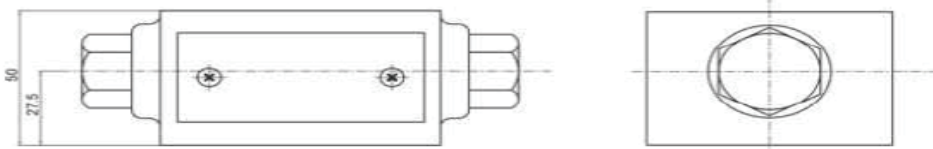
KPCV CHECK VALVES

Dimensions

KPCV-06



KPCV-10-



KPCV-16

