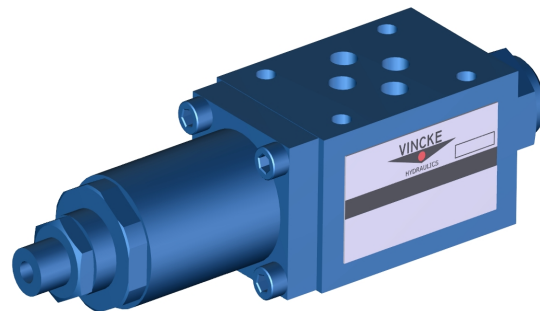


### KRDV REDUCING VALVES

KRDV series modular reducing valves are used to reduce the pressure in a certain circuit lower than of the main circuit.



#### Technical characteristics

Size	6	10	16
Max. Flow (L/min)	35	70	120
Max. W.P (Mpa)	210		
Working fluid	mineral oil ; phosphate-ester		
Fluid temperature (°C)	-20~70		
Viscosity (mm <sup>2</sup> /s)	12~380		

#### Ordering code

**KRDV-06-A-1-2**

#### Modular reducing Valve

NOMINAL SIZE: 06 Cetop 3 10 Cetop 5 16 cetop 7

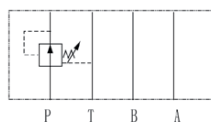
**P** P Pipeline relief    **A** A Pipeline relief

**B** B Pipeline relief

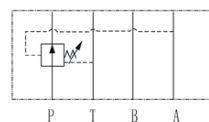
Adjustment type: 1:rotatory knob 2: sleeve with exagon.

Setting pressure 7 to 70Mpa 1 to 14Mpa 2 to 21Mpa

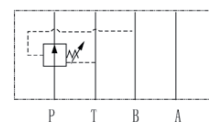
#### Code symbol



KRDV-P



KRDV-A



KRDV-B

